

Multifunctional corneal topographer



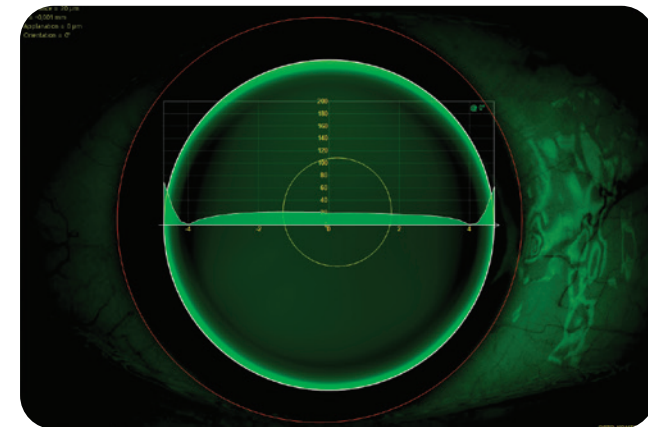
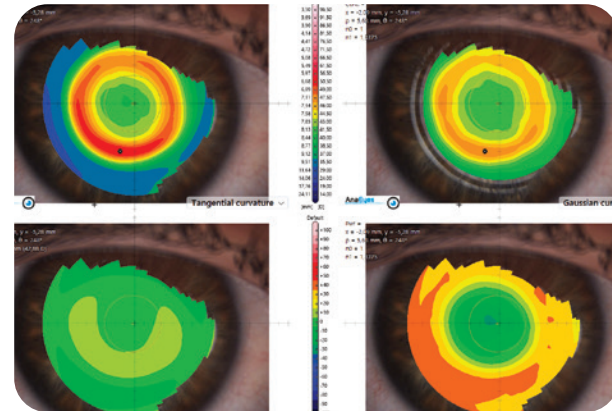
Precise diagnostic tool
for effortless contact
lens fitting.

CORNEA 550+

a multifunctional topographer delivering precise corneal measurements, contact lens fitting process, and a dry eye report.

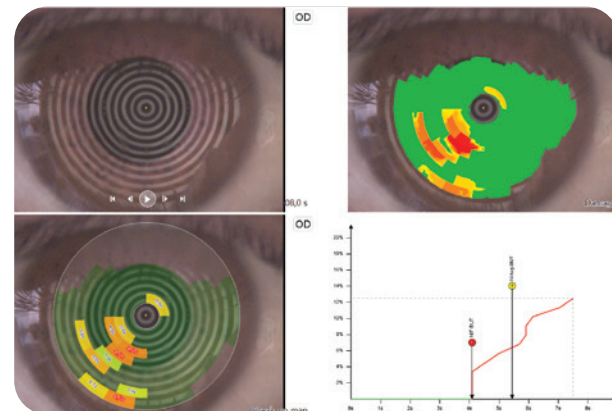
Precise evaluation of the corneal surface

- Corneal topography, including a variety of graphic presentations to facilitate anterior segment evaluation.
- Keratoconus screening module providing insightful pre-op information helping more informed clinical decisions.
- Enhanced repeatability enabled by newer focus design and higher image resolution¹.



Streamlined contact lens fitting process

- The fluorescein image simulation helps the practitioner to choose the most adequate lens from an extensive contact lenses library, comprising 27 brands.
- Dynamic and static capture of pupillary reactions for different light conditions (photopic, mesopic and scotopic).



Advanced tear film analysis for dry eye diagnosis

- The lipid layer is assessed with the optional auxiliary cone.
- Non-invasive measurement of the tear film break-up time (NIBUT) supported with video and pictures.
- Meibography including grading color scale to evaluate the gland loss.

1. Compared to the previous version of the instrument, Cornea 550.

A valuable tool to facilitate communication

- Paired with a high definition screen, enabling easy exchange of information with patients.
- Comprehensive and intuitive graphic representations to enhance your expertise.



Technical specifications

Specifications

Light Source

White light for corneal topography and videokeratoscopy

Blue light (470 nm) for pictures and video in fluorescein

IR LED (940 nm) for pupillography and meibography

Digital Camera

Color, high resolution (1440 x 1080)

Measurements Points

6144

Working Distance

74 mm (2.92 in)

PC Connection

USB 3.0

Dimensions and Weight

8 (W) x 20 (H) x 13 (D) in - 13 lbs approx.

Minimum requirements

PC Desktop

Processor Intel®: 8th gen or higher

CPU: i5 quad core, i7 or i9 (2.5 GHz or higher)

RAM: 8GB or higher

Video card: 1GB (non-shared memory), 1920x1080 or higher

Software

Windows® 10 Professional (64 bit) or higher



Cornea 550+-Brochure-US-V1-July2025

© Essilor International - July 2025

CORNEA 550+ (ANTARES +) is a EU Class I-m medical device intended for Optometry. CE 0051 marked. Manufacturer: CSO. For professional use only, read attentively the instructions for use.

As improvements are made, these specifications are not contractually binding and may be modified without prior notice. CORNEA 550+ (ANTARES +) is a trademark of Essilor International. Windows® is a trademark of Microsoft Corporation. Pentium® is a trademark of Intel Corporation.



NETWORK

