

YOUR PARTNER FOR A **SUCCESSFUL PRACTICE**



Essilor Instruments is a global leader in the development of state-of-the-art ophthalmic equipment. Our goal is to offer practices the equipment and services that will meet their business needs and help them build relationships with patients.

EssilorLuxottica



ESSILOR
INSTRUMENTS

Exam Room

Whether you are performing comprehensive ophthalmic tests or focusing on prescription checks, you can choose the appropriate function level and be sure of reliable measurements, even in the most complex cases.

VISION-R 700 REFRACTION SYSTEM

Fast and secured refraction

- Unique optical module permitting multiple incremental power changes to secure rapid 0.25D proven accuracy
- Simultaneous lens changes for a more direct and controlled refraction method: Digital Infinite Refraction
- Patient-specific program recommendation for guidance from start to finish
- Smart programs for easy refractions by simply recording patient answers
- Improved patient experience thanks to a wider field of vision, silent lens changes, and an easy response method
- Instant power changes for easy comparisons and patient confidence



VISION-S 700 REFRACTION STATION

Space saver and game changer with speed and accuracy built on exclusive innovation

- Eliminating the need for the traditional chart system, freeing up space to grow your business
- Patented algorithms combined with the optical module enabling Digital Infinite Refraction to ensure an accurate refraction in only 3 minutes
- Fully accessible to operators of varying levels
- Patented immersive imaging creates a truly unique patient experience and relaxed accommodation
- Prescriptions can be demonstrated in action with patented life-like scenarios, helping to increase lens conversions
- 4 out of 5 people prefer being tested on Vision-S 700 compared to a traditional refractor



APH 500 AUTOMATIC REFRACTOR

High-end automatic refractor for speed, precision, and comfort in every refraction situation

- Highly-intuitive, easy-to-use touch screen control
- Customizable test sequences
- Easy data transfer from lensmeter to streamline exam
- Compare prescriptions in 2 clicks to speed final check
- Quiet and high speed rotation disk for optimal patient comfort



SL650 / 650+ / 450 / 400 / 350 / 300 SLIT LAMPS

Superior image quality. Simply captured. Outstanding patient management

- Improved image quality and facilitated diagnosis
- Optimized patient management
- Simplified ergonomics and enhanced analysis
- SL650+ with the dry eye module that offers five non-invasive tests and generates a comprehensive dry eye report
- SL 450/350 in "Haag-Streit" style and SL 400/300 in "Zeiss" style



VISION-C 600 CHART SYSTEM

Universal screen for refraction rooms

- 24" polarized LCD screen
- Sleek look and feel
- Wide range of tests
- Ergonomic control
- Customizable
- Multiple setup options



OSC 600 EXAM CHAIR AND STAND

Versatile, robust, and durable for your clinical needs

- Integrates all standard functionalities into a compact form
- Precise movement and positioning
- Heavy-duty hydraulic lift system
- Reliable and easy to operate
- Made in the USA by Haag-Streit Reliance
- High quality at an affordable price



Diagnostics/Prescreening/Light Therapy

To further enhance your expertise from pretesting to the diagnoses of eye conditions, Essilor Instruments provides advanced solutions to improve your unique practice with your patients.

CELLVIEW WRI-1 RETINAL IMAGER

High-quality widefield fundus imaging

- Captures a retinal image and far into the periphery, up to 133° in a single-capture, or an up to 200° auto-stitched image
- Provides clear and high-definition images through small pupils, most cataracts, and other media opacities
- Full visible spectrum LED array, with true color and infrared imaging
- Easy-to-operate for nominal staff training



WAM 800 WAVEFRONT ABERROMETER

Fully-automatic for complete anterior chamber analysis and visual need assessment

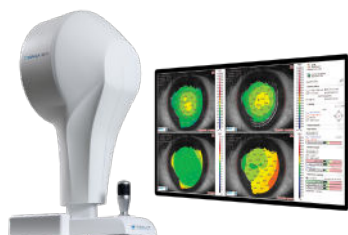
- Fast, effective, and space-saving
- 7 detailed tests in 90 seconds; both eyes
- Glaucoma screening and monitoring, keratoconus detection, and cataract screening
- Performance evaluation with eye strain and near-vision assessment and vision simulation



CORNEA 550+ TOPOGRAPHER

Precise diagnostic tool for effortless contact lens fitting

- Precise evaluation of the corneal surface
- Streamlined contact lens fitting process
- Advanced tear film analysis for dry eye diagnosis
- A valuable tool to facilitate communication



MYOPIA EXPERT 700 OPTICAL BIOMETRY + TOPOGRAPHY

Fast and accurate solution for measuring axial length and corneal topography

- Corneal analyzer with an integrated pupillographer and optical biometer
- Fluorescence imaging for contact lens fittings
- Storage and overviews of historic ocular data properties for easy observations of changes over time
- Myopia Care Digital Solution - Effective and proactive myopia management for early detection and long-term monitoring



AKR 800 AUTO KERATO-REFRACTOMETER

Automatic and easy AKR to enhance your practice

- Easy-to-use and fully-automatic
- Deliver precise and reliable objective refraction
- Enhance your daily practice with great user convenience
- Assess night vision and fit contact lenses



ALM 800 AUTOMATIC LENSMETER

Unique combination of the latest lensmeter technologies

- UV transmission measurement
- Unique quantification and display of blue-violet light
- Interpupillary distance measurement
- Guided and automated prism marking
- Lens support adapted to all lenses and frame curves
- Ergonomic design with tilting color screen
- Data transfer to automatic refractors and/or patient management software



PTS 925 AUTOMATED COMPACT PERIMETER

Small yet mighty

- Compact perimeter that provides everything you need in a compact footprint
- Self-adjusting light and not impacted by ambient light
- Intuitive software and powerful networking and EMR integration
- Maintenance-free and reliable hardware
- Saving time and delivering cutting-edge precision and reliability
- Incredible value



PTS 2000 AUTOMATED PROJECTION PERIMETER

Light up your practice

- Complete set of standard perimetry tests
- Variety of threshold algorithms and screening techniques
- Binocular Driver's Test, Flicker perimetry and Blue on Yellow
- Complete palette of analysis tools for quick and thorough assessment of visual fields
- Comparison and progression module available in standard package
- Kinetic testing for quick evaluation of peripheral field loss
- Standard test reports and global indices



LIGHT THERAPY EPI-C PLUS

Powerhouse with both OPE IPL and LM LLLT

- Features both of our core technologies, Light Modulation Low-Level Light Therapy (LM LLLT) and Optimal Power Energy Intense Pulsed Light (OPE IPL)
- Optimal, non-invasive treatment of inflammatory conditions in the facial area, including the periorbital area.
- Durable stainless steel body with an upgradable operating system
- Safe for most skin types on the Fitzpatrick scale
- Low cost per patient and fast ROI



LIGHT THERAPY IPL AND LLLT CONSUMABLES



Optimal Power
Energy IPL Lamp



Targets
inflammation



Eliminates
bacteria



Reduces swelling &
increases drainage



NETWORK

