

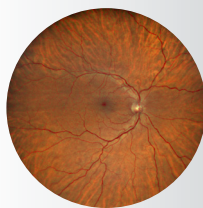
OPHTHALMIC, FINISHING, AND LIGHT-THERAPY EQUIPMENT SHOWCASE

NEW PRODUCT INTRODUCTION



CELLVIEW WRI-1 RETINAL IMAGER

Accessible
high-quality
ultra-widefield
fundus imaging



Producing a retinal image up to 133° in a single-capture, or a 200° auto-stitched image through pupils as small as 2.5mm

EXAM ROOM



VISION-R™ 700 REFRACTION SYSTEM

Smart digital refraction system with exclusive optical module



VISION-S™ 700 REFRACTION STATION

Space-saving immersive station and game changer with speed and accuracy



SL650+ SLIT LAMP IMAGING SYSTEM

Superior slit lamp imaging with Meibomian gland analysis

DIGITAL EXAM LANE PACKAGE



+



+



+



**CONTACT US
FOR PRICING**

PRETESTING AND DIAGNOSTIC



CORNEA 550+ CORNEAL TOPOGRAPHER

Topography,
Meibography and
Dry Eye Diagnostics



MYOPIA EXPERT 700 OPTICAL BIOMETER

Fast and accurate solution for measuring axial length and corneal topography



REICHERT® TONO-VERA® HANDHELD TONOMETER

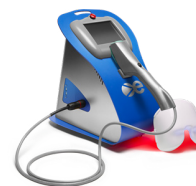
Game-changer in
IOP measurement



WAM 800 WAVEFRONT ABERROMETER

Fully automated
anterior segment
screening solution

LIGHT THERAPY



EPI-C PLUS

All-in-one powerhouse with both Light Modulation® LLLT and Optimal Power Energy® IPL

EDGING SYSTEMS



ES™ 700M

Master your edging with hybrid milling and grinding technology

Contact us for details or to discuss our special offers.

CONTACT US