

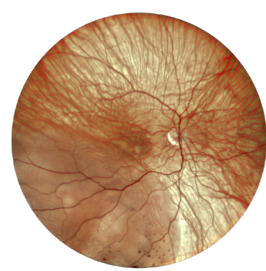
DIAGNOSTIC AND PRETESTING EQUIPMENT SHOWCASE

CELLVIEW WRI-1

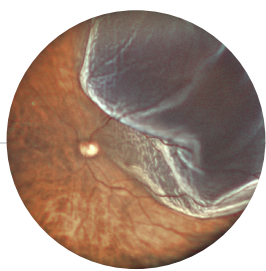
RETINAL IMAGER

WRI-1 from Cellview provides operators with advanced imaging tools for examining the retina and far into the periphery. Producing a retinal image up to 133° in a single-capture, or a 200° auto-stitched image, the WRI-1 captures clear and high-definition retinal images through small pupils, most cataracts, and other media opacities.

- Full visible spectrum LED array, with true color and infrared imaging, to allow for more accurate identification of potential pathologies that may go unnoticed with other imaging methods.
- Easy-to-operate for nominal staff training, unskilled operator usage, and decreased examination times for greater practice throughput.



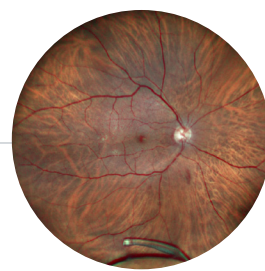
Inferior retinal detachment in a high myope



Superior temporal retinal detachment



Inferior retinal detachment



Dislocated IOL

[LEARN MORE](#)

CORNEA 550+

CORNEAL TOPOGRAPHER

The Cornea 550+ corneal topographer is a precise diagnostic tool for dry eye assessment and contact lens fitting.

- Precise evaluation of the corneal surface
- Streamlined contact lens fitting process
- Advanced tear film analysis for dry eye diagnosis
- A valuable tool to facilitate communication



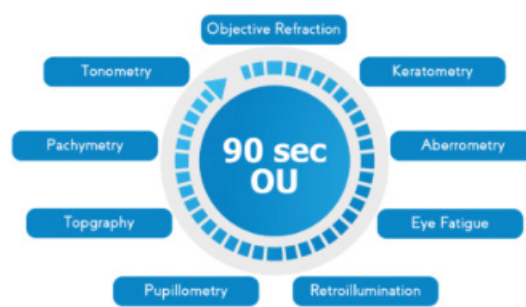
[LEARN MORE](#)

WAM 800

WAVEFRONT ABERROMETER

WAM 800 is a very intuitive, rapid and fully-automatic wavefront aberrometer that combines several technologies to enable eye care professionals to provide a comprehensive screening of the eye in less than two minutes.

- Glaucoma screening and monitoring
- Keratoconus detection
- Cataract screening
- Myopia control
- Patient vision simulation
- Eye strain and near-vision assessment
- Virtual workstation available
- Efficiency in optical environments



[LEARN MORE](#)

Contact us for details or to discuss our special offers.

[CONTACT US](#)