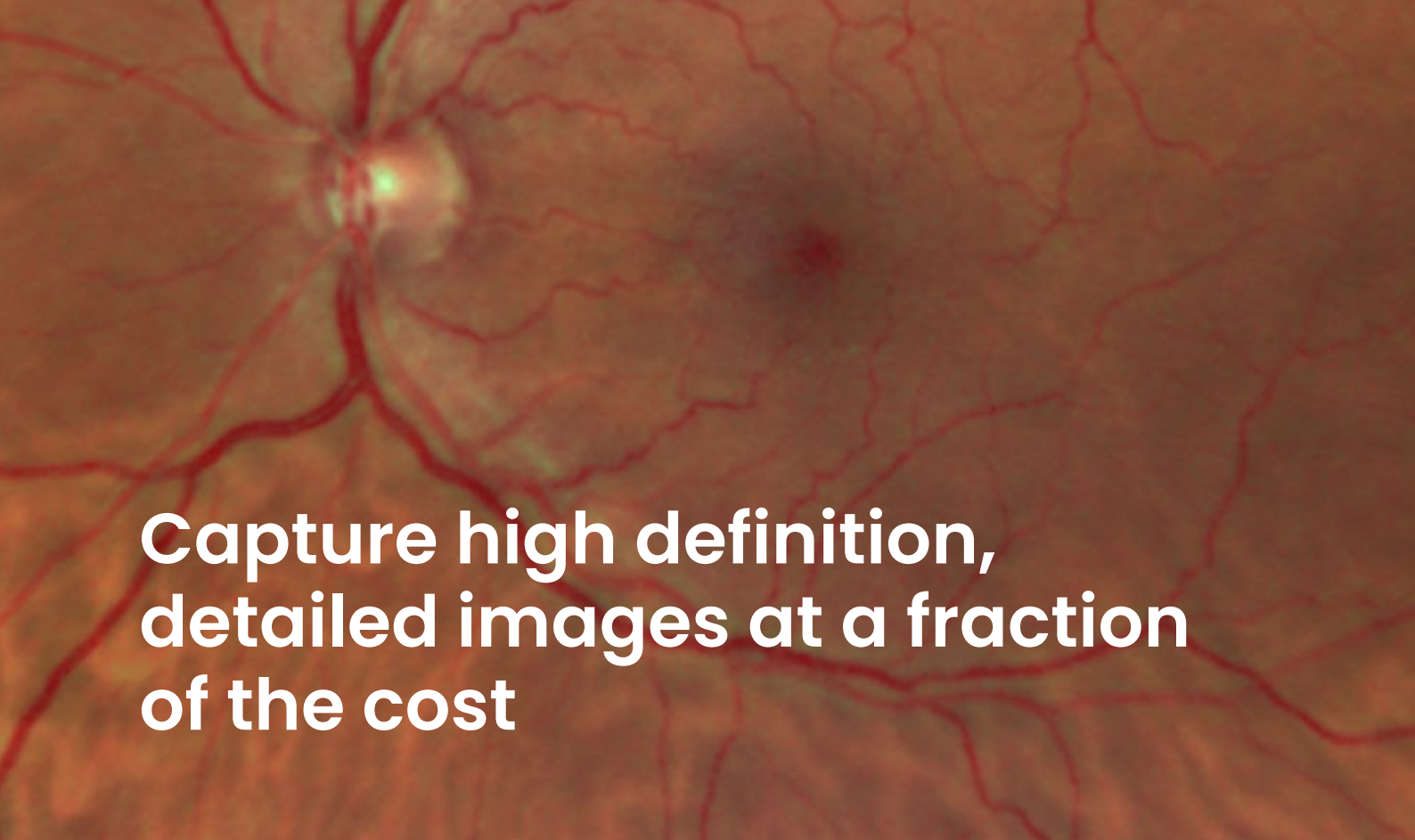




WRI-1 from Cellview Imaging

Ultra-Widefield Non-Mydriatic Retinal Imager

Discover the Future of Affordable High-Quality
Ultra-Widefield Retinal Imaging



Capture high definition,
detailed images at a fraction
of the cost





Cellview Imaging's WRI-1 Ultra-Widefield Retinal Imager

Introducing a new era of accessible high quality
ultra-widefield fundus imaging.

WRI-1 from Cellview provides operators with advanced imaging tools for examining the retina and far into the periphery. Producing a retinal image up to **133°** in a single-capture, or a **200°** auto-stitched image, the WRI-1 captures clear and high-definition retinal images through small pupils, most cataracts, and other media opacities.

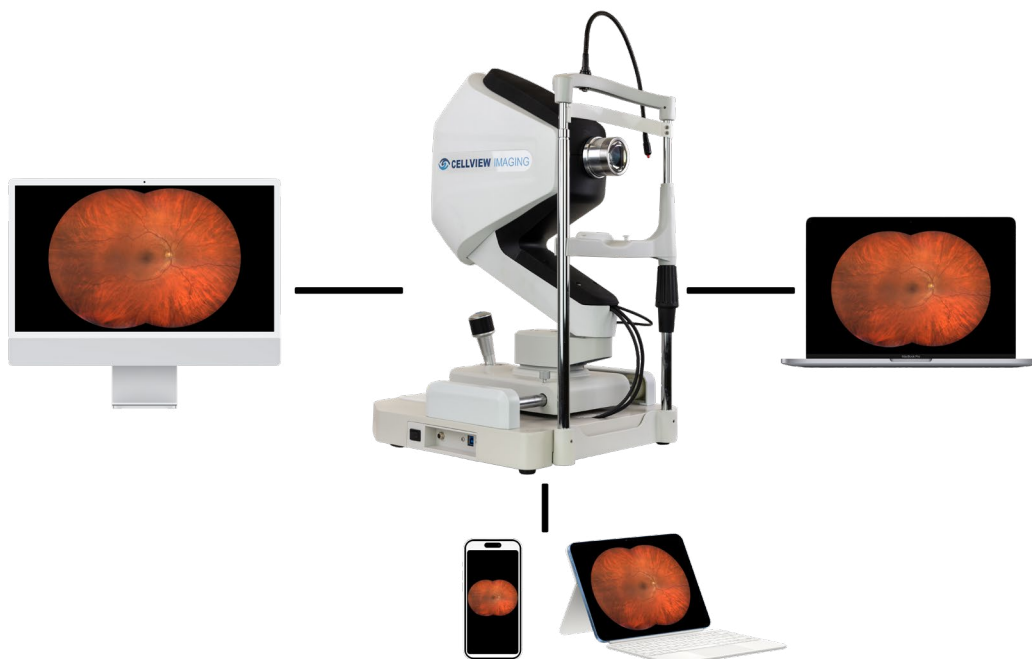
Imaging through pupils as small as 2.5mm allows for improved patient flow by assisting operator activities, eliminating the need for dilating patients, and reducing examination times.

WRI-1 from Cellview revolutionizes retinal imaging and assists in the detection and management of vision-threatening pathologies by combining:

	Full visible spectrum LED array, with true color and infrared imaging, to allow for more accurate identification of potential pathologies that may go unnoticed with other imaging methods.
	Easy-to-operate for nominal staff training, unskilled operator usage, and decreased examination times for greater practice throughput.
	Low upfront investment for higher practice profitability and a dramatically faster payback period.
	Advanced telehealth features to enhance access to services, support collaborative care, enable remote patient monitoring, and provide time and cost savings for both doctors and patients.

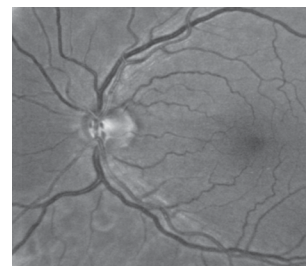
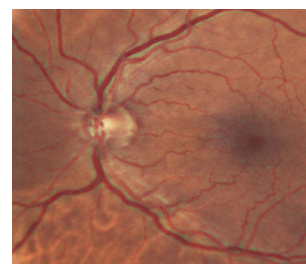
Quality. Collaboration. Comfort.

Access patient data and information from any location with the **WRI-1 Remote Review** software. Collaborate with specialists and colleagues, even if they are in different parts of the world. Enhances diagnostic accuracy and treatment planning by leveraging the expertise of multiple professionals.



Increase patient workflow and efficiency with advanced telehealth capabilities and multimodal imaging.

The Non-Mydriatic WRI-1 Ultra-Widefield Retina Imager from Cellview features a low intensity flash, patient friendly system. The device has the ability of covering the full visible spectrum for Full Color and Infrared retinal imaging.

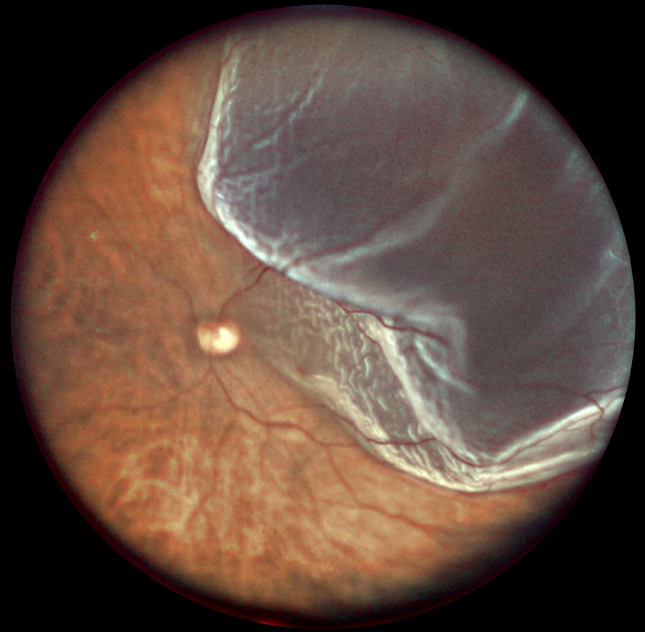


Features That Set Us Apart:

1. **Unlimited Cloud Storage:** Your valuable data is securely stored in the cloud, accessible whenever and where ever you need it.
2. **Unlimited Remote Review Stations:** Easily review and share images from any location, facilitating collaboration and patient care.
3. **Remote Servicing Feature:** No more waiting for onsite technicians. Get instant help when you need it, minimizing downtime and costs.
4. **Automatic Software and Feature Upgrades:** Stay at the forefront of technology with seamless updates, ensuring you always have the latest tools at your fingertips.
5. **Express Couriered Unit Replacements:** In the rare event of a hardware issue, we'll swiftly provide replacements at no additional cost, ensuring minimal disruption to your practice.
6. **Precision Imaging with Auto Focus & Auto Gain:** Automatically adjusts focus and gain for sharp, high-resolution retinal images, streamlining the imaging process and reducing the need for manual adjustments by clinicians.



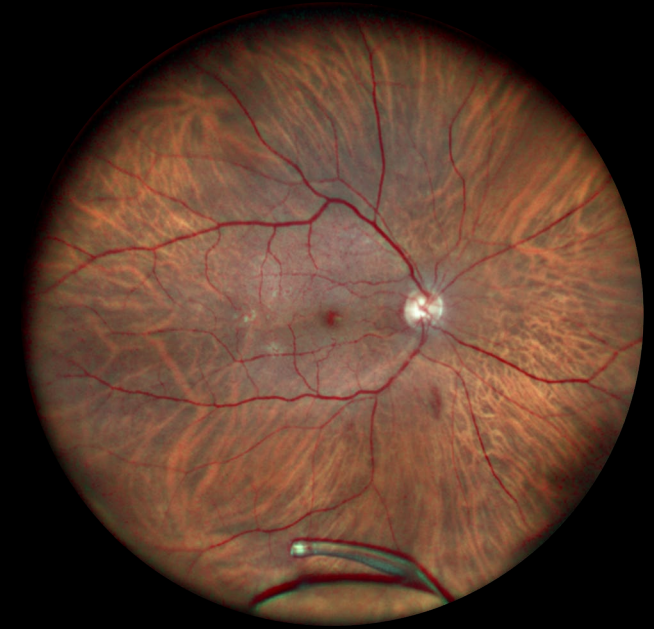
Inferior retinal detachment in a high myope



Superior temporal retinal detachment



Inferior retinal detachment

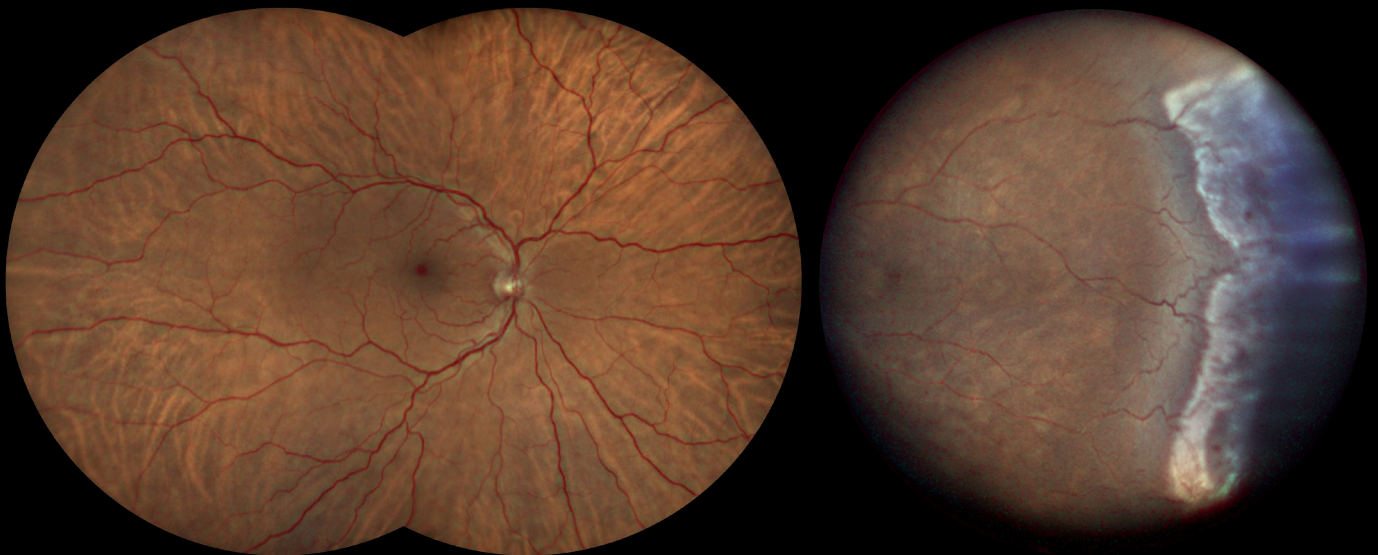


Dislocated IOL

The WRI-1 Ultra-Widefield Retinal Imager

allows for a comprehensive view of the retina, producing a 200° image via a two-image auto-stitch

This comprehensive view enables doctors to detect, diagnose, and monitor a wide range of retinal conditions and pathologies, including peripheral abnormalities or pathologies, that might otherwise go unnoticed with narrower field-of-view imaging. By capturing a more extensive retinal area, doctors can identify early signs of retinal diseases, such as diabetic retinopathy retinal tears, or other peripheral retinal lesions, at a stage when intervention and treatment are most effective.



User-operated steerable internal fixation, which facilitates image capture within the extended periphery, encompassing regions beyond the traditional 200-degree field of view.

Technical Specifications

WRI-1 Ultra-Widefield Retina Imager


Field of View	Single image: 133° Two auto stitched images: 200° x 133°
Illumination Source	Four LED array covering 460-830nm spectrum
Image Capture Modes	Full Color, Red-Free and Infrared
Minimum Pupil Size	Non-Mydriatic 2.5mm
Auto-Focus	-15D to +15D (in steps of 0.25D) or user controlled
Auto-Gain	Automatic Gain Control (AGC) closed-loop feedback helps to maintain a constant image output irrespective of the patient's pigment avoiding too dark or too bright (over saturated) retinal images
Working Distance	12mm
Pixel Pitch Resolution	12 microns
Fixation Target	Internal OLED, Fixed Points or User Controlled across 133° Field of View
Image Capture & Display	Micro Computer with 22 high res LG monitor
Data Storage	Unlimited patient data and images automatically stored in the Cloud
Remote Review Stations	Unlimited Review Stations software included (on any Laptop or Computer)
Display	FHD and/or 4K
System Size (WxHxD)	320 mm (12.6") x 540 mm (21.25") x 390 mm (15.4")
Weight	14 Kg. (30.9 lbs)
Electrical Class	IEC60601-1 Class 1
Voltage	100-240 VAC
System Voltage	24 VDC
Power	60 W Max.

Discover the Future of Affordable High-Quality Ultra-Widefield Retinal Imaging


At Cellview Imaging, our mission is to revolutionize eye care by providing **high-quality** ultra-widefield retinal imaging devices that are not only technologically advanced but also **remarkably affordable**. We are dedicated to making innovative retinal imaging accessible to healthcare professionals worldwide, ensuring early diagnosis and effective management of eye conditions while enhancing the well-being of patients. With a commitment to excellence and affordability, we aim to transform the landscape of eye care, making it more inclusive, efficient, and patient-centric.

Together, we strive to bring clarity and affordability to eye care, enriching lives through accessible, state-of-the-art retinal imaging solutions.



 10 Kodiak Crescent Suite 120, North York, ON M3J 3G5

 contactus@cellviewimaging.com

 +1 437-918-9120



The contents of this piece may differ from the current status of approval of the product or service offering in your country. Please contact our representatives for more information. Specifications are subject to changes in design and scope of delivery and as a result of ongoing research and technical development.