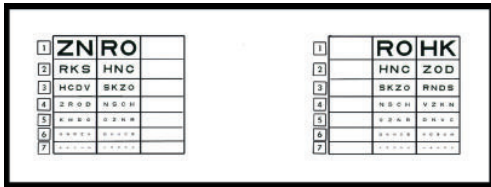
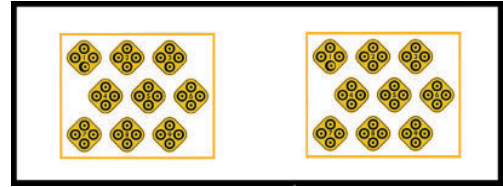


Stereo Optical Ophthalmic Prescreening Slide Package

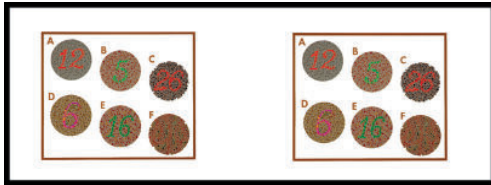
For the complete vision screening needs preschool through adult. Ideal for School, Athletic Physicals, Employment Physicals, F.A.A. and General Check-Ups.



Slide #1 (2000-003) Far Point
Acuity Right Eye & Left Eye Monocular
or Both Eyes Simultaneously (20/200-20/20)



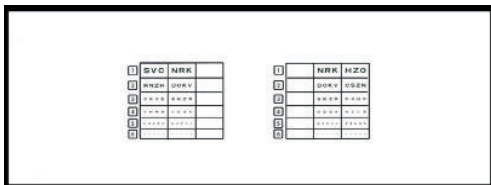
Slide #7 (2000-024) Far Point
Stereo Depth Perception
(400-20 Seconds of Arc)



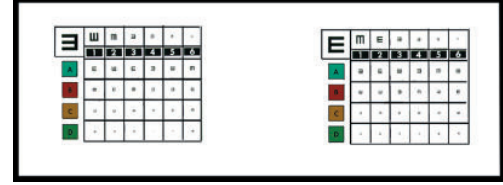
Slide #2 (2000-010) Far Point
Color Perception (Pseudo Ishihara)



Slide #8 (2000-087) Far Point
Binocular Fusion



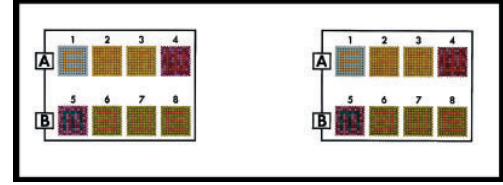
Slide #3 (2000-007) Near Point
Acuity Right Eye & Left Eye Monocular
or Both Eyes Simultaneously (20/100-20/20)



Slide #9 (2000-004) Far Point
Acuity Right Eye & Left Eye Monocular
Right Eye & Left Eye Plus Lens Test (20/200-20/20)



Slide #4 (2000-012) Far Point
Lateral Phoria (1 Diopter Increments)



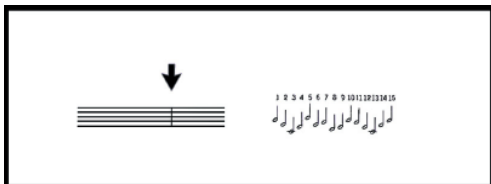
Slide #10 (2000-019) Far Point
Color Perception (Tumbling "E")



Slide #5 (2000-025) Far Point
Vertical Phoria (1/2 Diopter Increments)



Slide #11 (2000-020) Far Point
Muscle Balance
(Combination Lateral & Vertical Phoria)



Slide #6 (2000-013) Near Point
Lateral Phoria (1 Diopter Increments)



Slide #12 (2000-046) Far Point
Acuity Allen Test
Binocular (20/100) Monocular (20/50-20/30)